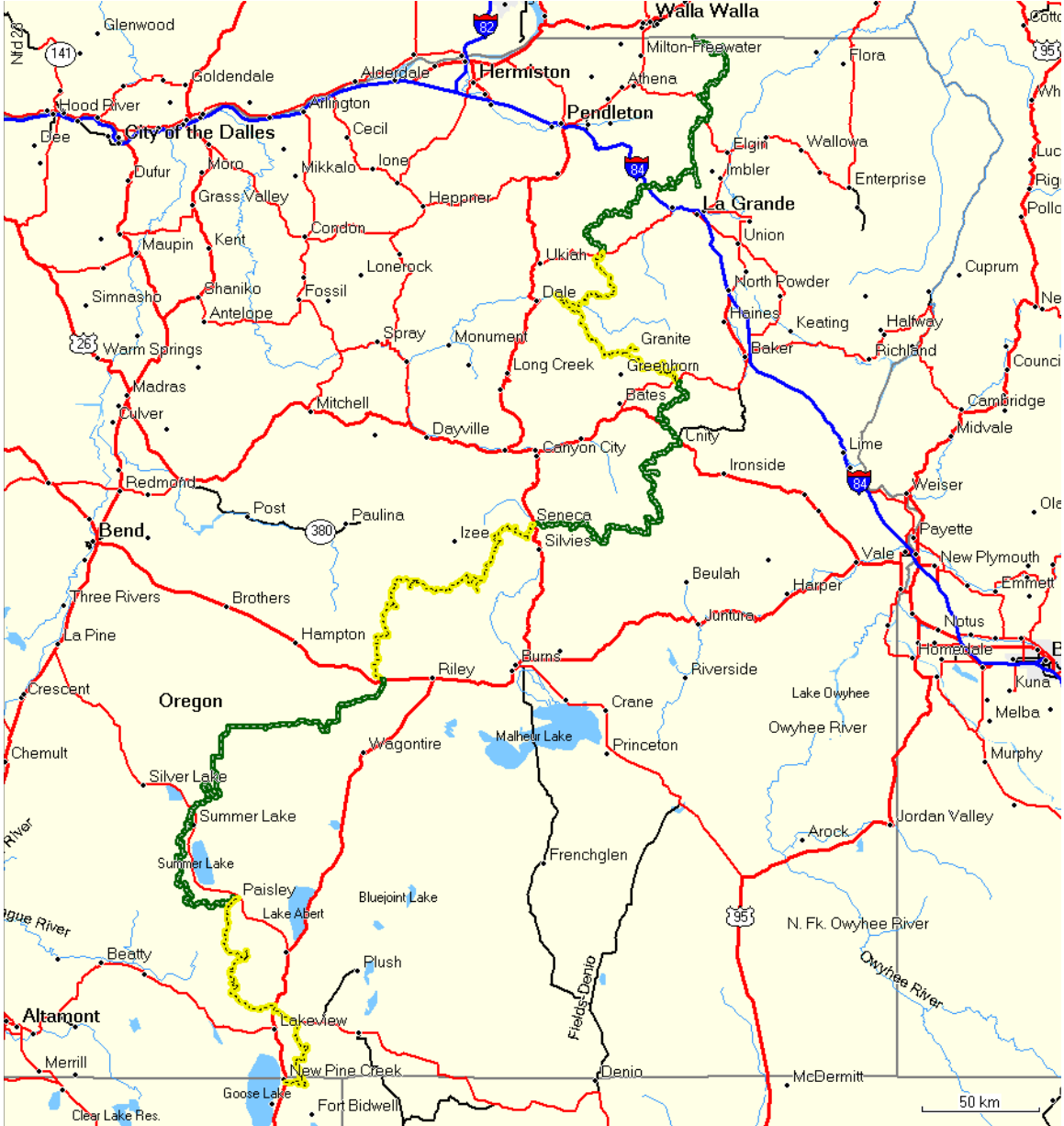




OTRA DUAL SPORT RIDE June 29 / July 04 - 2008 OREGON BACK COUNTRY DISCOVERY ROUTE



Green and yellow tracks indicate the daily rides

1. Itinerary

Day 1: Sunday June 29	Meet in Walla Walla, WA 8AM. Ride to Starkey	Approx. Distance 252km
Day 2:	Starkey to Sumpter	235km
Day 3:	Sumpter to Seneca	227km
Day 4:	Seneca to Burns	280km
Day 5:	Burns to Paisley	324km
Day 6: Friday July 04	Paisley to Goose Lake Meet at Lakeview Lodge Motel on arrival.	194km

2. What is the Oregon Back Country Discovery Route

From the OORV (Oregon Off Highway vehicle association):

Route 5 of the Oregon Back Country Discovery Route is a great adventure into Oregon's incredibly diverse and beautiful less traveled roads. This allows the adventurer to experience a very little traveled part of Oregon's vast, varied and incredible back country.

For the vast majority of its 750 miles the BCDR elevation ranges from 4000' plus to 6000' plus. On the Route, one will travel from the high open meadows with Aspen and mixed Fir at the California border (6000'+), to the high desert sand dunes of Christmas Valley (4000'+), and into the lush conifer forest of northern Oregon.

The BCDR has commercial services available approximately every 100 miles with street legal vehicles needed for access. Campgrounds are available along the route. Due to the elevations the Route is a late Spring, Summer adventure, depending on snow arrival in the Fall and departure in the Spring.

The Route is accessible at many places as it crosses highways and secondary roads. Your journey will be one of few contacts with others. One needs to plan for being self-sufficient. Travel with others is highly recommended. Sections have cell phone reception, but should not be counted on. Gas is available approximately every 100 miles; most will require travel on street legal roads for access. Much of Route Five is high and temperatures can get into the teens and twenties at night even during the warm months of the year.

In the 700 plus miles of the OCDR, you will experience vistas that seem to go into tomorrow, beautiful lakes, alpine meadows, aspen groves, isolated campgrounds, long deserted homesteads, high desert meadows, and forests of many kinds, along with many different kinds of wildlife. A running steam railroad and a preserved gold barge are just a stones throw from the BCDR.

If you take the time to stop and listen, one can hear voices of Oregon's hardy settlers, and with a few miles detour one can visit the much recommended Oregon Trail's Interpretive Center just outside of Baker City.

Maps are available from OOHRV and I have GPS tracks available in .gpx format.

If you are interested in this ride, please contact me:
Jack Pyck; 250-470-4124; jack@quantechsoftware.com

3. MEETING PLACES –

START RIDE:

Sunday June 29 8AM.
Colonial Motel (509) 529 1220
2279 E. Isaacs
Walla Walla, WA 99362

END RIDE:

Lakeview Lodge Motel
301 N G St
Lakeview, OR (541) 947-2181

4. Lodging

Walla Walla:

- Best Western Walla Walla Suites Inn (509) 525 4700
7 East Oak Street
Walla Walla, WA 99362
- Walla Walla East Main St. Travelodge (509) 529 4940
421 E. Main St
Walla Walla, WA 99362
- La Quinta (509) 525-2522
520 N 2nd Avenue
Walla Walla, WA 99362
- Budget Inn (509) 529-4410
305 N 2nd Ave
Walla Walla, WA 99362
- Walla Walla Vineyard Inn (509) 529-4360
325 East Main Street
Walla Walla, WA 99362
- Holiday Inn Express (509) 525-6200
1433 W Pine St,
Walla Walla, WA 99362

Night 1

Ukiah:

- Stage Stop Motel & RV (541) 427-3352
503 Highway 244, Ukiah
- Antlers Inn (541) 427-3492
103 Main St, Ukiah
- Lehman Hot Springs
Ukiah - (541) 427-3015

Starkey:

- Mountain Sound RV & Starkey Store
58588 Grande Ronde River Rd.
Starkey, OR (541)428-2121

Night 2

Granite

- Lodge at Granite
1575 Mccan Street
Sumpter, OR (541) 755-5200

Sumpter

- Depot Inn
179 S Mill Street
Sumpter, OR (541) 894-2522
- Scoop-N-NSteamer Station & Log
363 S Mill Street
Sumpter, OR (541) 894-2236
- The Lazy Moose Cabin
Sumpter, OR (541) 894-2414
- Powder River Cottage
289 S Mill Street
Sumpter, OR (541) 894-2419

Night 3**Seneca**

- Timbers Inn & RV
Hwy 395 Mile Pos
Seneca, OR (541) 542-2609

Night 4**Burns**

- Wagontire Motel & Cafe
53558 Highway 395 S
Riley, OR (541) 493-2317
- Comfort Inn
504 N. Hwy 20
Hines, OR (541) 573-3370
- Knotty Pine Motel
104 S Highway 395 & 20
Hines, OR (541) 573-7440
- Silver Spur Motel
789 N Broadway Ave
Burns, OR (800) 400-2077
- Sage Country Inn
351 1/2 W Monroe St
Burns, OR (541) 573-7243
- Horseshoe Inn
999 Oregon Ave,
Lawen, OR (541) 573-2034
- Travel Shoppe
544 N Broadway Ave
Burns, OR (541) 573-2103
- Horton House
191 W C St
Burns, OR (541) 573-1687
- City Center Motel
73 W Monroe St
Burns, OR (541) 573-5100
- Lone Pine Guest Ranch
72172 Long Pine Rd
Burns, OR (541) 573-2103
- Steens Country Cabin
E Steens Rd
Burns, OR (541) 495-2344

Night 5

Paisley

- Miles Motel
302 Highway 31
Paisley, OR (541) 943-3148
- Summer Lake Lodge
Paisley, OR (541) 943-3994

Night 6

Lake View

- Lakeview Lodge Motel
301 N G St
Lakeview, OR (541) 947-2181
- Budget Inn-Lakeview
411 N F St
Lakeview, OR (541) 947-2201
- Interstate 8 Motel
354 N K St
Lakeview, OR (541) 947-3341
- Rim Rock Motel
727 S F St
Lakeview, OR (541) 947-2185
- Quail Run Inn
20166 Goldmohr Terrace Dr
Lakeview, OR (541) 947-5502
- Geyser Hot Springs
18088 Hwy 395 N
Lakeview, OR (541) 947-4242
- Best Western
414 N G St
Lakeview, OR (541) 947-2194

5. What to bring?

This list is just a suggestion, most of you will know exactly what to bring.

- PASSPORT or other suitable ID for border crossing.
- Dual Sport bike, in good working order, insured and plated, with good off road tires.
- Carry enough gas for about 300 km range.
- Light camping gear (tent, sleeping gear and some food). We're going to try to find lodging and dinner every night, but cannot guarantee availability. We won't know for sure where we will end up at night.
- Plenty of water.
- First aid kit.
- US Medical insurance.
- Cell phone and charger.
- Standard toolkit, spare tube(s) and tire repair kit.
- Summer and spring riding gear and clothing. It may get very hot in the desert at daytime and pretty cold at night at higher elevations.
- A decent set of maps of the area and/or GPS. Detailed maps of this ride are available at www.oohva.org. I have the GPS tracks available for download if anybody wants it.
- To the best of my knowledge, ATV stickers are not required. We will be riding on existing roads and tracks, not designated off road areas.